

7th Annual Women and Heart Disease Symposium

Introduction and Overview

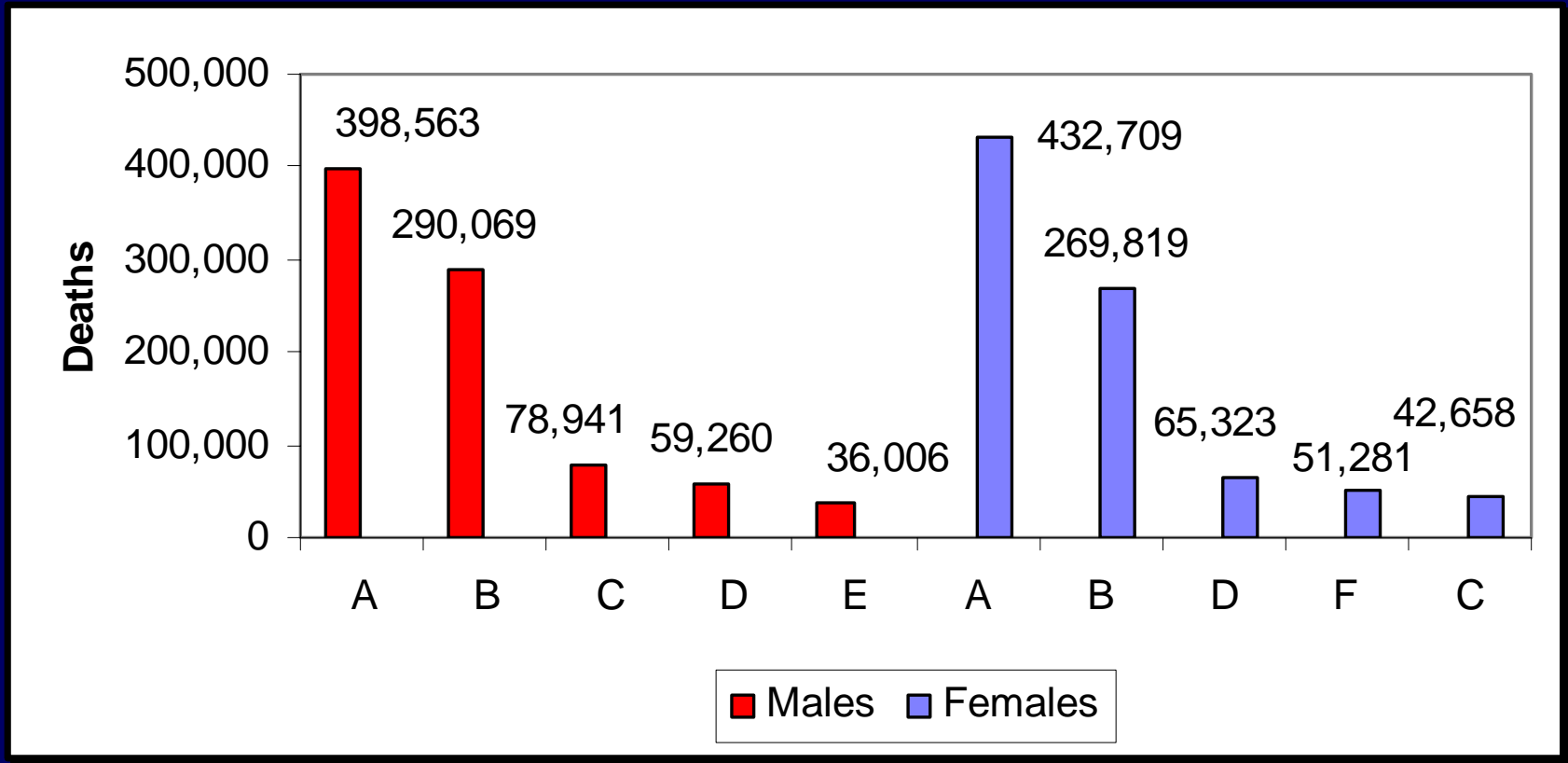
Santosh Gill, M.D. FACC

Medical Director, Women's Heart
Center at Rush-Copley Heart
Institute

A program of Fox Valley
Cardiovascular Consultants



CVD: Leading Cause of death



A CVD (I00-I99; Q20-Q28)

B Cancer

C Accidents

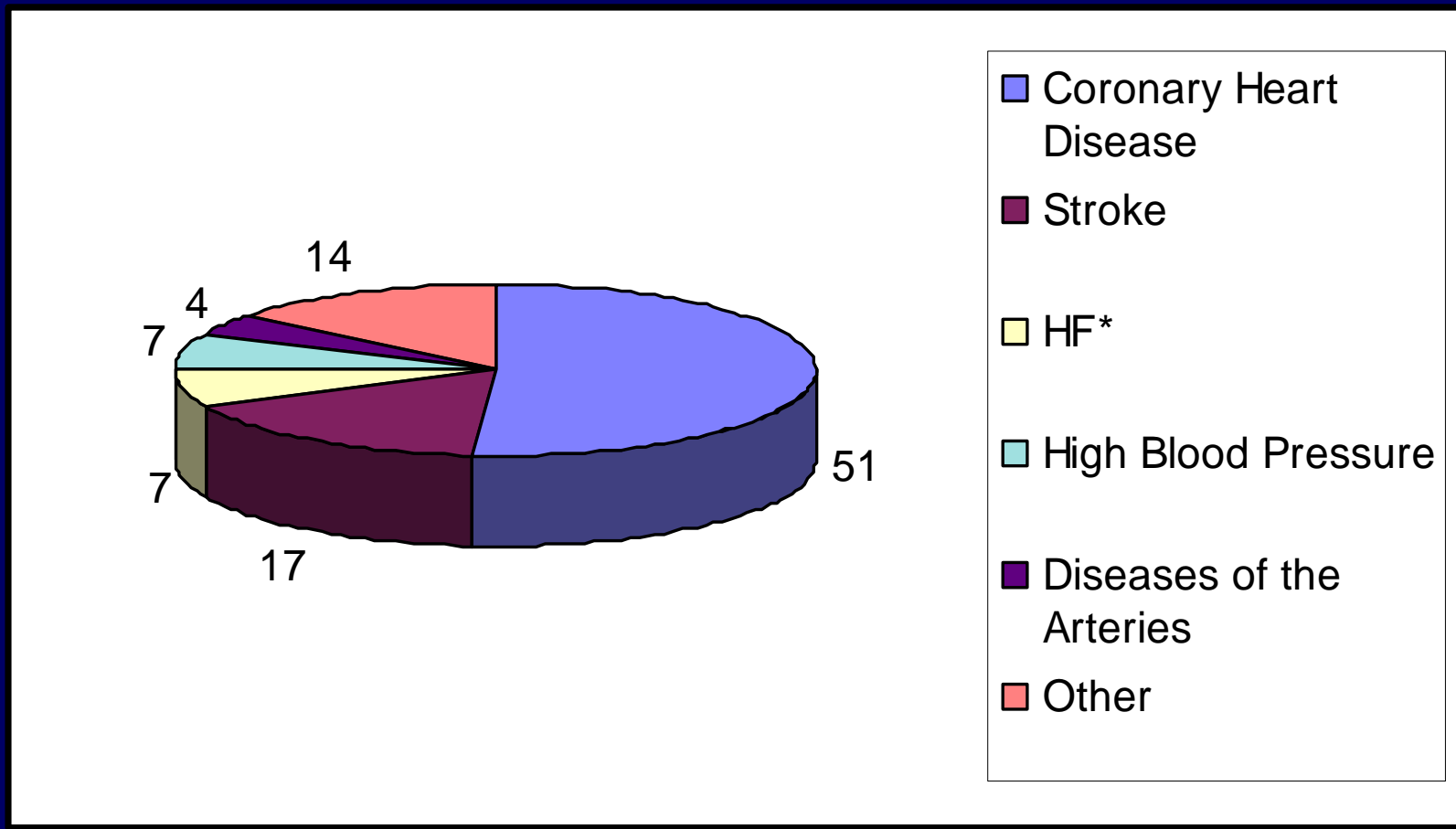
D Chronic Lower Respiratory Diseases

E Diabetes Mellitus

F Alzheimer's Disease

CVD and other major causes of death for all males and females (United States: 2006). Source: NCHS and NHLBI.

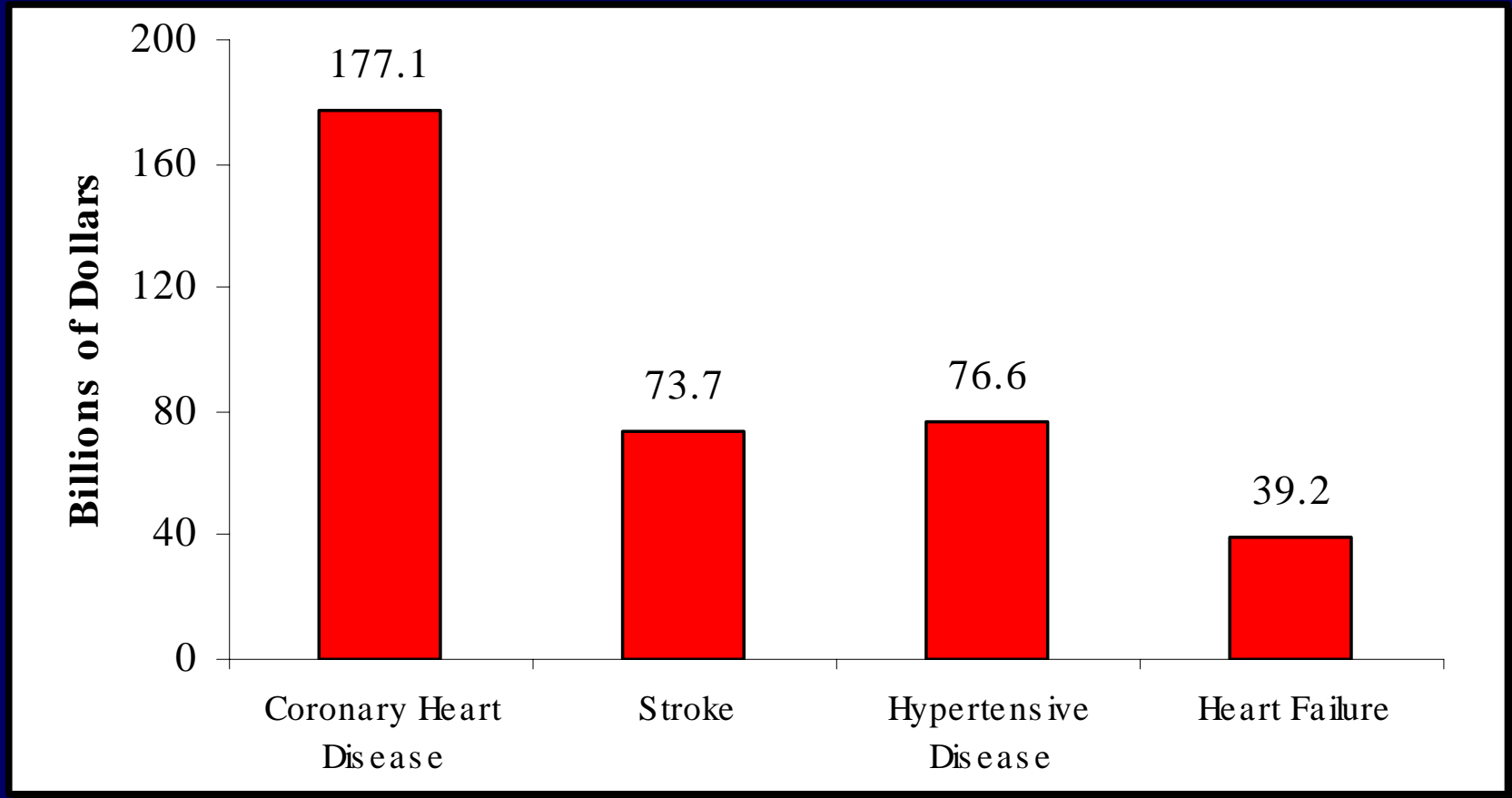
Heart Failure: Contribution to CVD Death



Percentage breakdown of deaths from cardiovascular diseases (United States: 2006) * - Not a true underlying cause.

Source: NCHS.

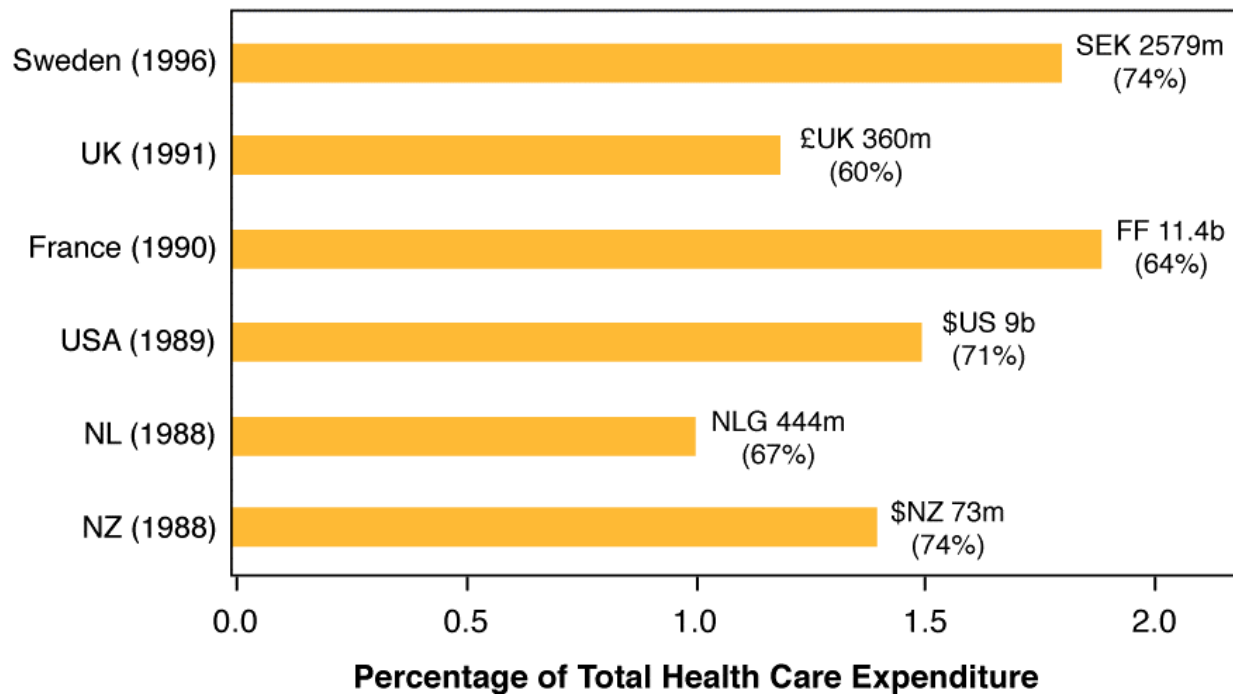
Heart Failure: Health Care Cost



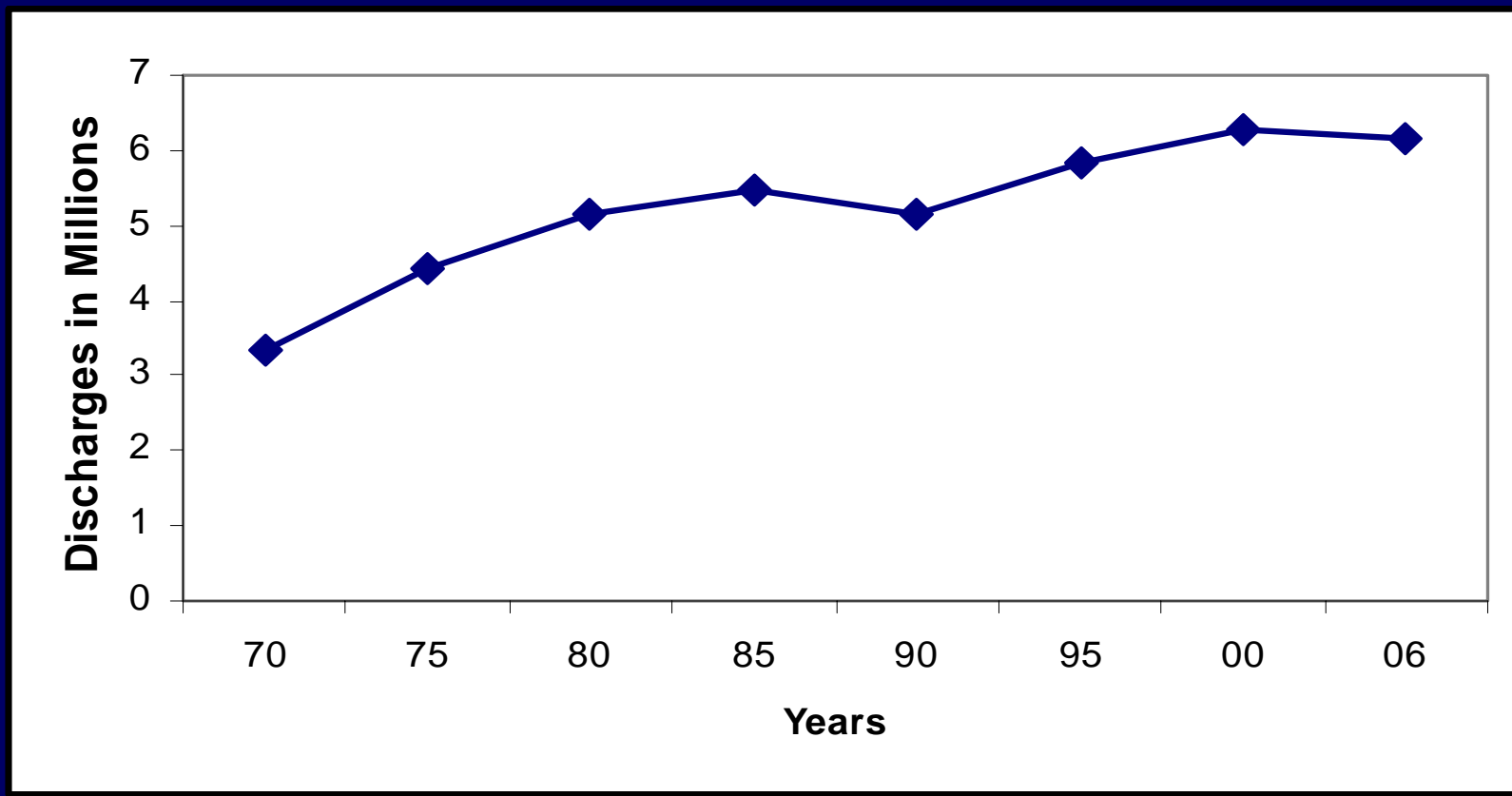
Estimated direct and indirect costs (in billions of dollars) of major cardiovascular diseases and stroke (United States: 2010). Source: NHLBI.

Heart Failure: Health Care Cost

% of Total Health Care Expenditure for Heart Failure



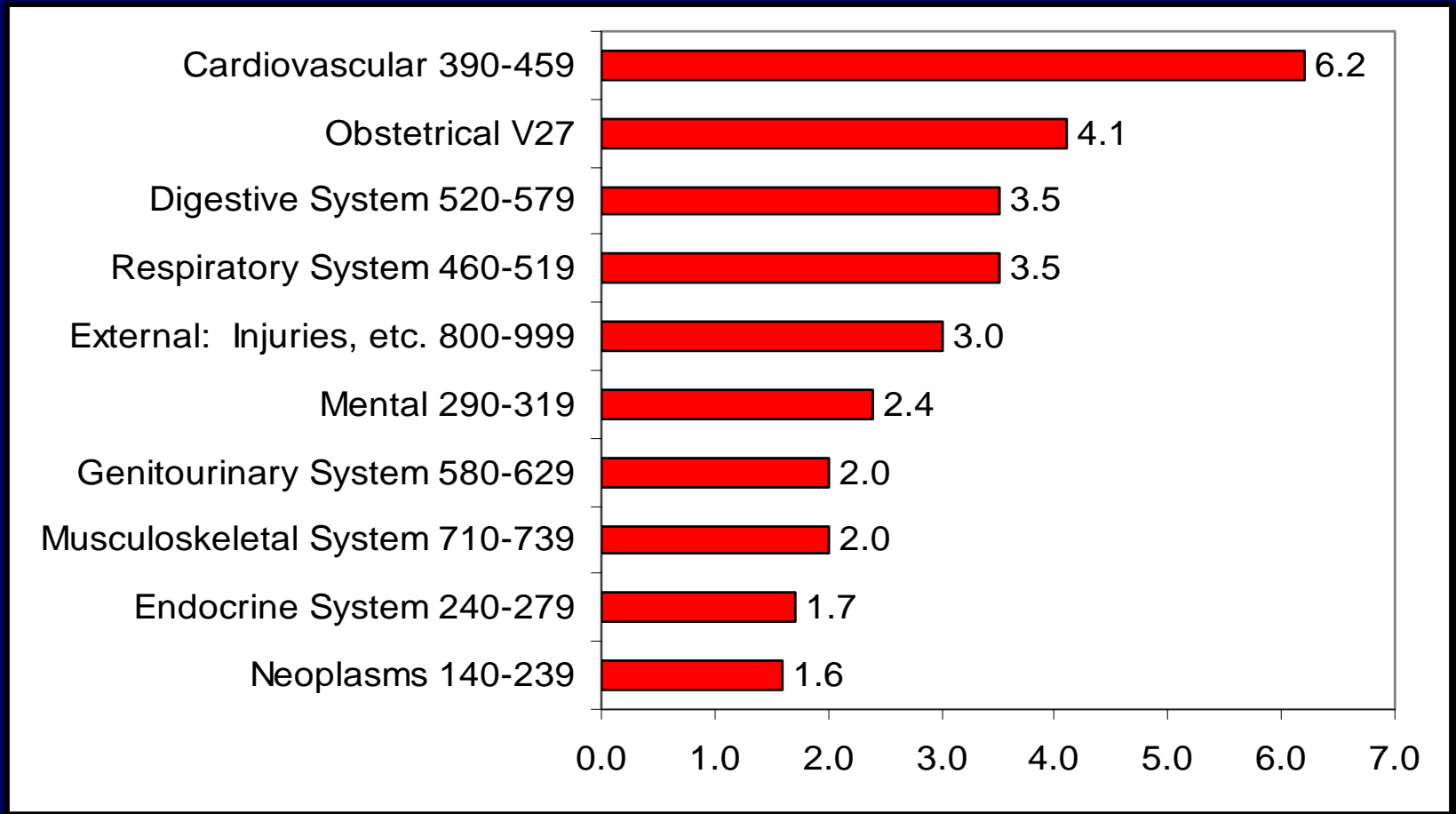
Hospital Discharges: CVD



(United States: 1970-2006). Note: Hospital discharges include people discharged alive, dead and status unknown.

Source: NCHS and NHLBI.

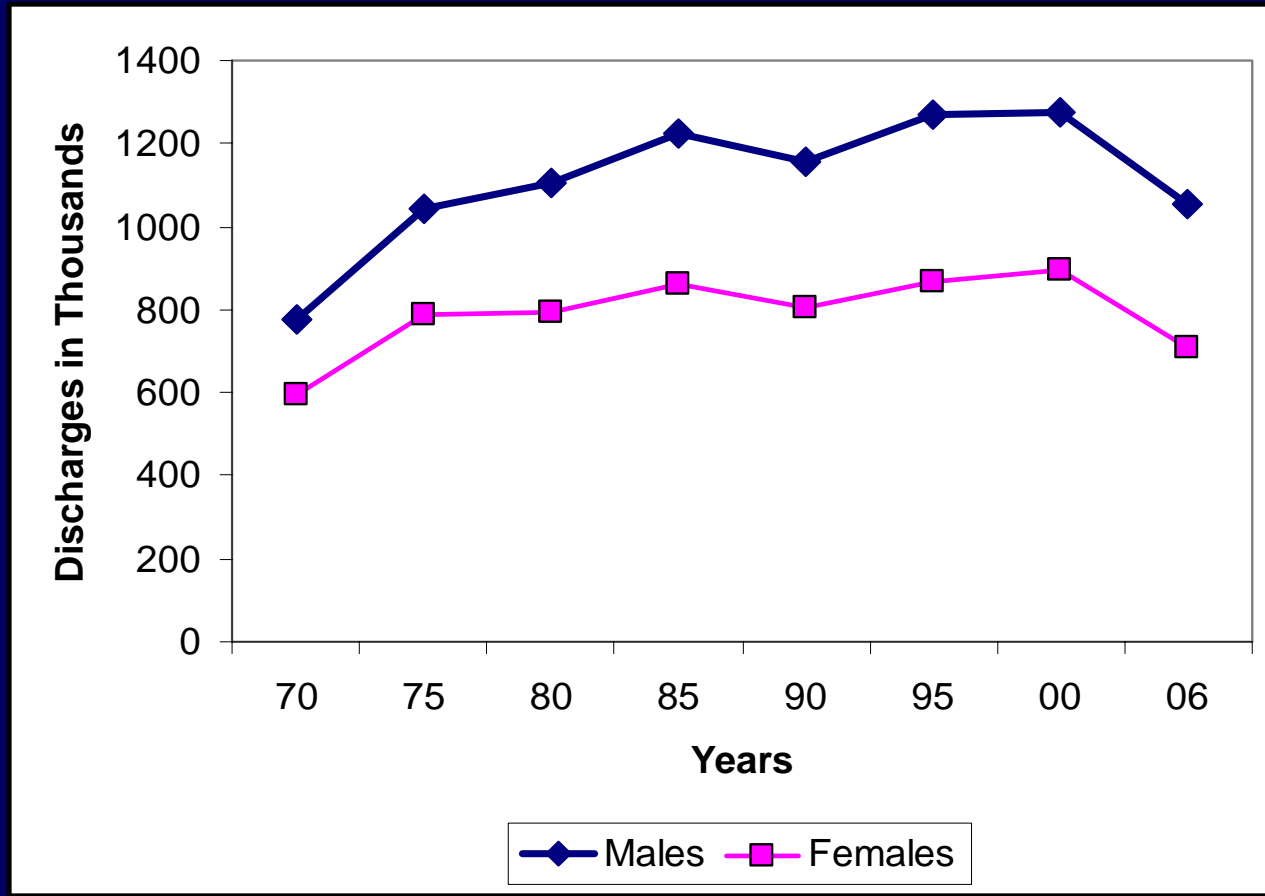
Hospital Discharges: CVD



Hospital Discharges (in millions) for the 10 Leading diagnostic Groups (United States: 2006). Source: NHDS/NCHS and NHLBI.

Epidemiology, Etiology, and Public Health Implications of Heart Failure

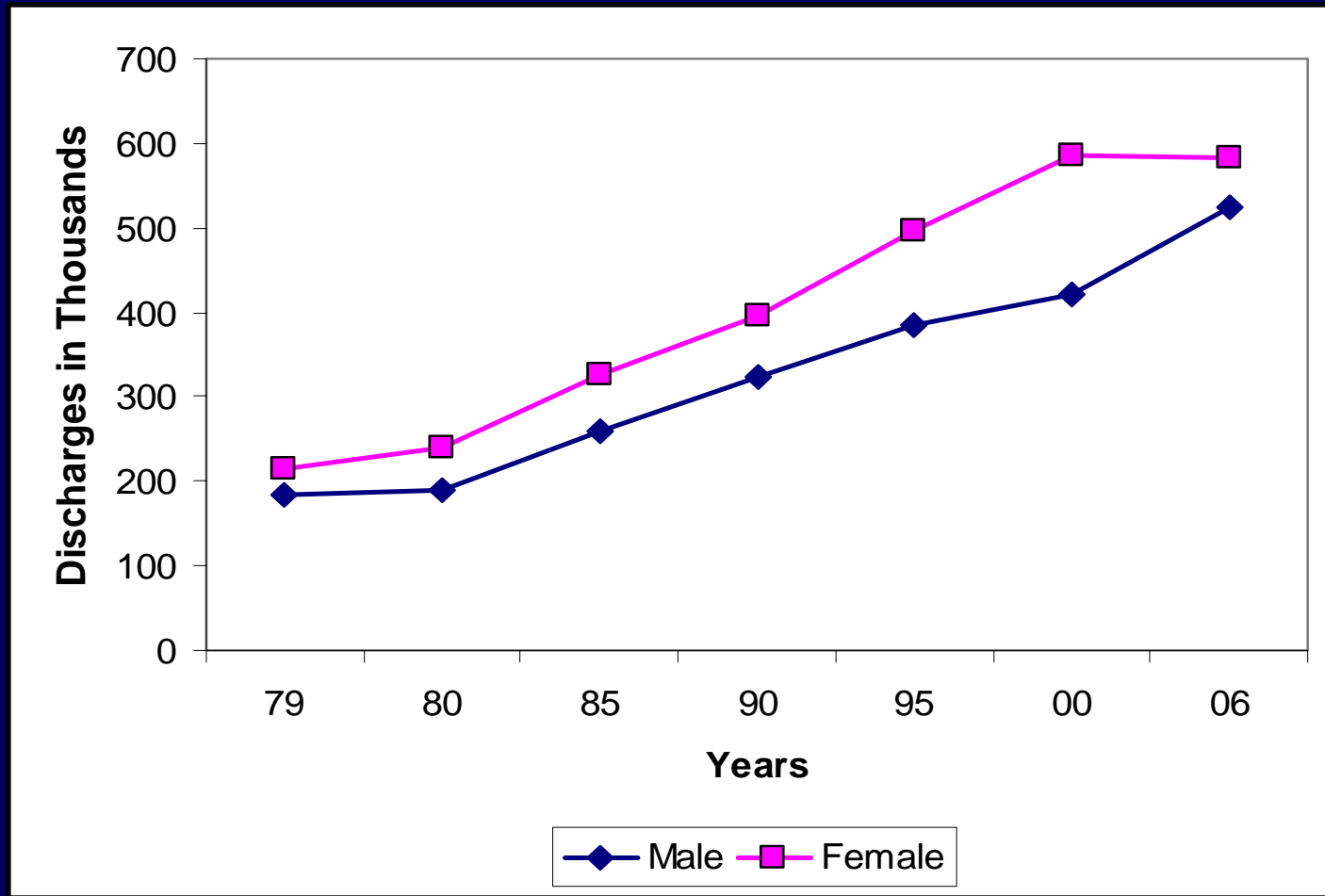
Hospital discharges :CAD



(United States: 1970-2006). Source: NHDS/NCHS.

Note: Hospital discharges include people discharged alive, dead, and status unknown.

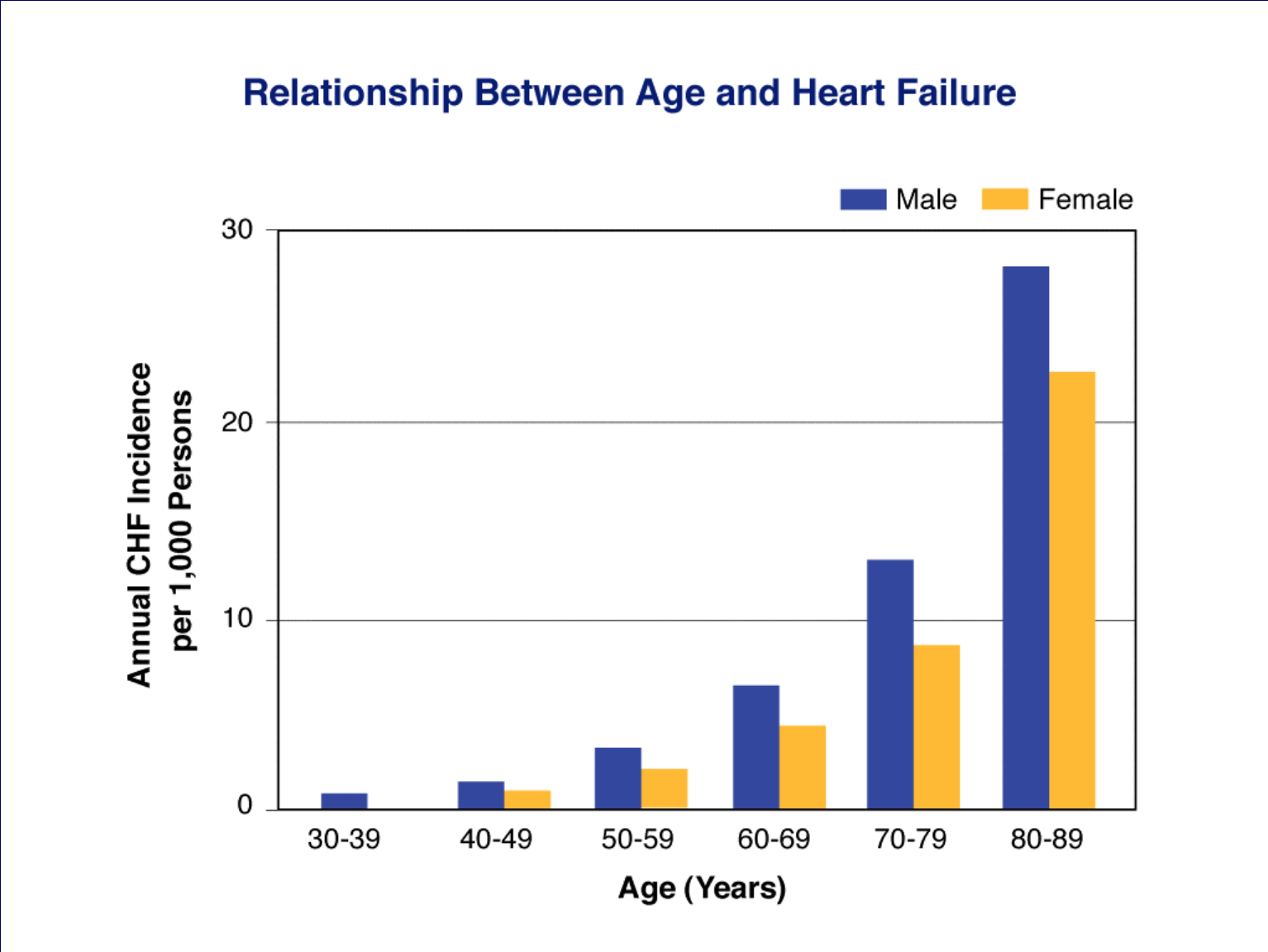
Hospital Discharges: Heart failure



(United States: 1979-2006). Source: NHDS/NCHS and NHLBI.
Note: Hospital discharges include people discharged alive, dead and status unknown.

Epidemiology, Etiology, and Public Health Implications of Heart Failure

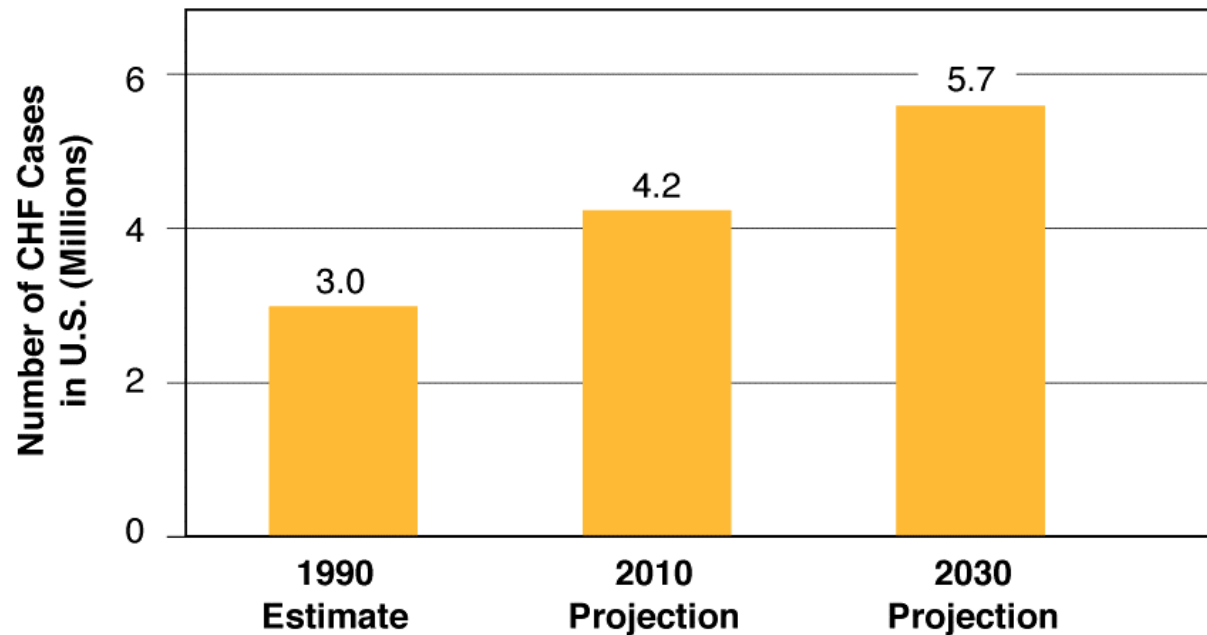
Aging and Heart Failure



Epidemiology, Etiology, and Public Health Implications of Heart Failure

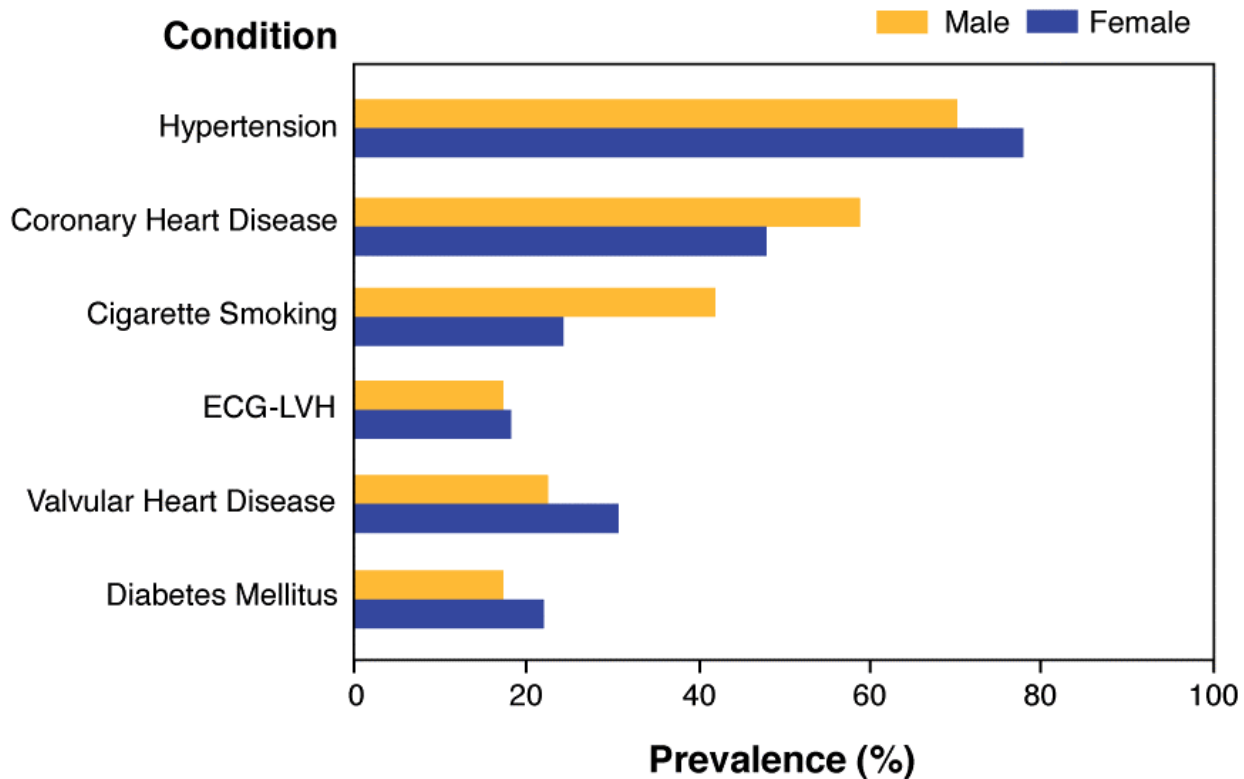
Heart Failure Projections

**CHF Prevalence to Nearly Double by Year 2030
as U.S. Population Ages**



Prevalence of Risk Factors

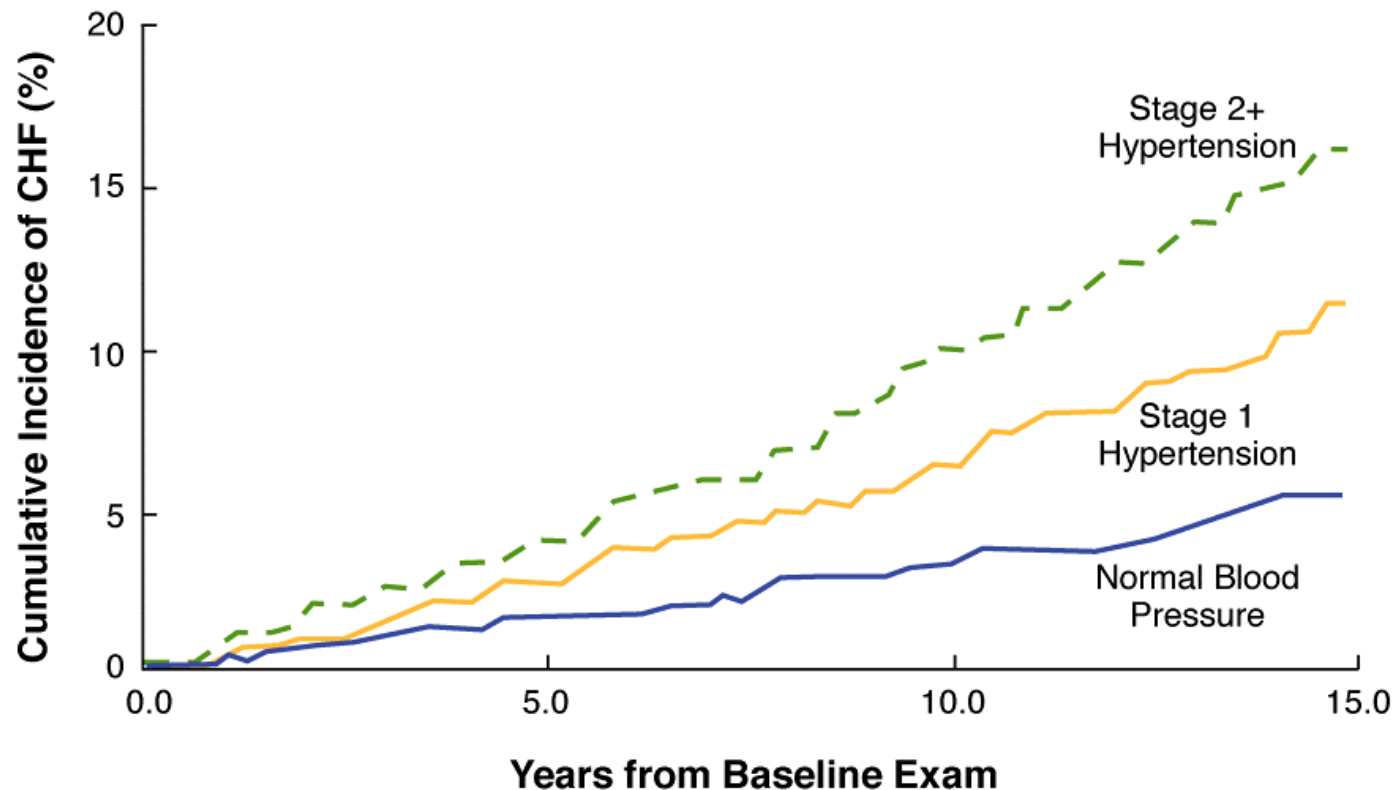
Prevalence of Etiology and Risk Factors for Heart Failure



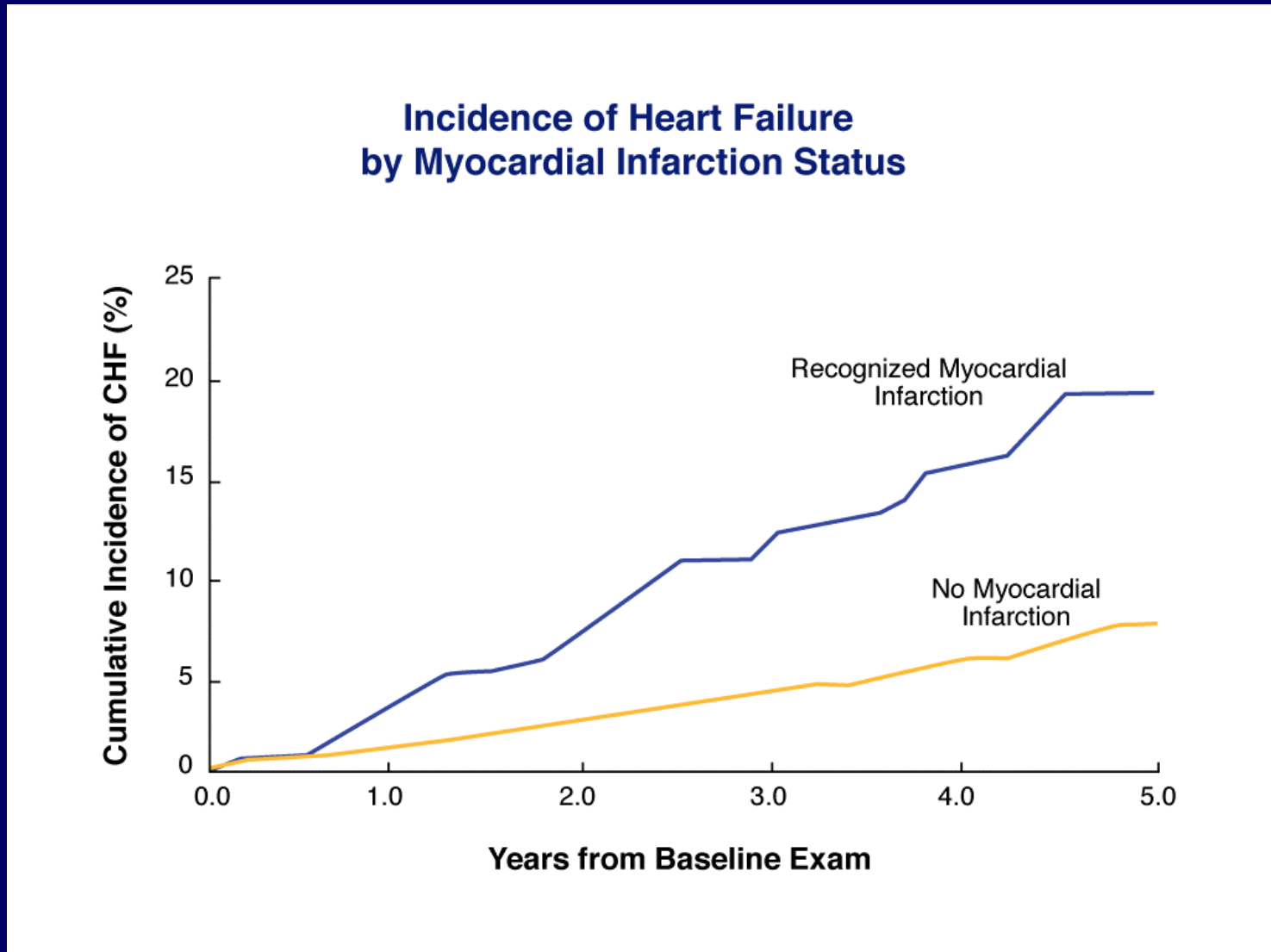
Epidemiology, Etiology, and Public Health Implications of Heart Failure

Hypertension and Heart Failure

**Incidence of Heart Failure in Men and Women
Age 50 to 79 by Hypertension Status**

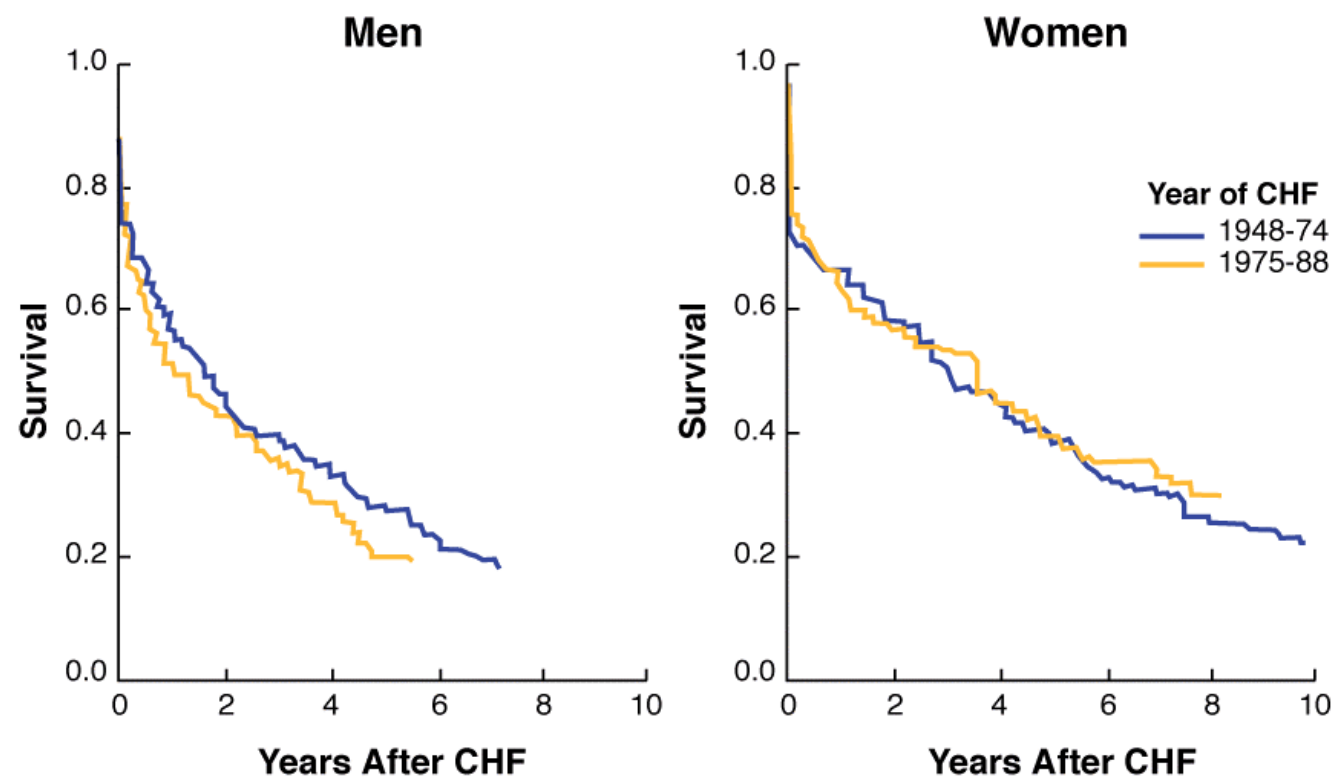


Myocardial Infarction and Heart Failure



Heart Failure: Survival

Age Adjusted Survival Rates After Diagnosis of Heart Failure



Program Overview